

张狂的白调延伸

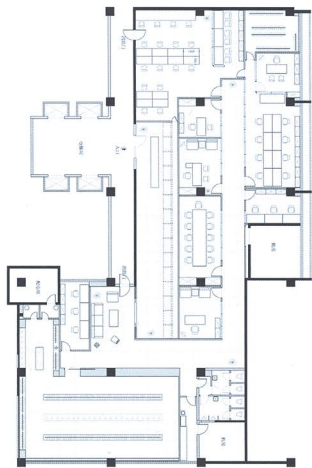
深圳西帷办公室

采编 > 陈惠慧 文编 > 吴钢 翻译 > 巫雯锦

INCANA Office, Shenzhen

这间办公室属于一个新兴的服装品牌，2010年创办的西帷以高端、年轻、创新来定位自己。因此希望本次的设计可以为其建立起一个没有地域、文化束缚的张狂、开放的国际化办公空间，传达其进步的企业形象。

This office belongs to a burgeoning clothing brand. INCANA, founded in 2010, has high-end, young and innovative orientation. It hopes that an open international office space which doesn't have regional and cultural constraint could be set up through this design, so as to transmit its progressive corporate image.



If you pick the right people and give them the opportunity to spread their wings, and put competent people as a carrier behind them, you don't have to manage them.

项目面积: 750平方米
项目地点: 深圳
设计单位: 汉诺森
设计师: 王文亮
主要材料: 瓷砖反面涂刷、白色氟碳漆金属网

Area: 750 m²
Location: Shenzhen
Design Company: Halucinate Design
Designer: Wenliang Wang
Main Material: Ceramic Tile Reverse Painted, White Fluorocarbon Paint Metal Net



材质运用上反对堆砌，尝试利用廉价瓷砖的反面肌理，通过重新拼接打磨、涂刷，显现出一种精致、有序的美感，同时显得温馨而时尚。墙面与白色金属网的连接呼应，为空间注入纯净而轻盈的独特气质。

The material application opposes stuffing and tries to utilize the reverse texture of the cheap tiles, after matching, polishing and painting, a kind of delicate and ordered beauty is created, showing warm and fashionable feelings. The linkage and echoing between wall and white metal net add pure and graceful unique temperament to the space.

